

See discussions, stats, and author profiles for this publication at: <https://www.researchgate.net/publication/342467317>

First association of scale insects (Hemiptera: Diaspididae) with *Salacia crassifolia* (Mart. Ex Schult.) G. Don. (Celastraceae)

Article in *Insecta Mundi* · June 2020

CITATIONS

0

READS

5

4 authors, including:



[Marcelo Tavares de Castro](#)

Centro Universitário ICESP

35 PUBLICATIONS 25 CITATIONS

[SEE PROFILE](#)



[Sandro Coelho Linhares Montalvão](#)

Embrapa Recursos Genéticos e Biotecnologia Cenargen

25 PUBLICATIONS 25 CITATIONS

[SEE PROFILE](#)



[Vera R S Wolff](#)

Secretaria Estadual de Agricultura, Pecuária e Desenvolvimento Rural - SEAPDR

56 PUBLICATIONS 172 CITATIONS

[SEE PROFILE](#)

Some of the authors of this publication are also working on these related projects:



Control of plant diseases [View project](#)



Biological Control of Pests and Diseases with Bacteria and Fungi [View project](#)

INSECTA MUNDI

A Journal of World Insect Systematics

0774

First association of scale insects (Hemiptera: Diaspididae)
with *Salacia crassifolia* (Mart. Ex Schult.) G. Don. (Celastraceae)

Marcelo Tavares de Castro
Centro Universitário ICESP de Brasília
Departamento de Agronomia
Brasília, 71961-540, Brazil

Sandro Coelho Linhares Montalvão
Embrapa Recursos Genéticos e Biotecnologia
Laboratório de Bactérias Entomopatogênicas
Brasília, 70770-917, Brazil

Vera Regina dos Santos Wolff
Secretaria Estadual de Agricultura, Pecuária e Desenvolvimento Rural
Departamento de Diagnóstico e Pesquisa Agropecuária
Rio Grande do Sul, 90130-060, Brazil

Rose Gomes Monnerat
Embrapa Recursos Genéticos e Biotecnologia
Laboratório de Bactérias Entomopatogênicas
Brasília, 70770-917, Brazil

Date of issue: June 26, 2020

Marcelo Tavares de Castro, Sandro Coelho Linhares Montalvão, Vera Regina dos Santos Wolff, Rose Gomes Monnerat
First association of scale insects (Hemiptera: Diaspididae) with *Salacia crassifolia* (Mart. Ex Schult.) G. Don. (Celastraceae)
Insecta Mundi 0774: 1–5

ZooBank Registered: urn:lsid:zoobank.org:pub:B98D6213-6926-43F5-88B2-C56B61BD4A36

Published in 2020 by

Center for Systematic Entomology, Inc.
P.O. Box 141874
Gainesville, FL 32614-1874 USA
<http://centerforsystematicentomology.org/>

Insecta Mundi is a journal primarily devoted to insect systematics, but articles can be published on any non-marine arthropod. Topics considered for publication include systematics, taxonomy, nomenclature, checklists, faunal works, and natural history. *Insecta Mundi* will not consider works in the applied sciences (i.e. medical entomology, pest control research, etc.), and no longer publishes book reviews or editorials. *Insecta Mundi* publishes original research or discoveries in an inexpensive and timely manner, distributing them free via open access on the internet on the date of publication.

Insecta Mundi is referenced or abstracted by several sources, including the Zoological Record and CAB Abstracts. *Insecta Mundi* is published irregularly throughout the year, with completed manuscripts assigned an individual number. Manuscripts must be peer reviewed prior to submission, after which they are reviewed by the editorial board to ensure quality. One author of each submitted manuscript must be a current member of the Center for Systematic Entomology.

Guidelines and requirements for the preparation of manuscripts are available on the *Insecta Mundi* website at <http://centerforsystematicentomology.org/insectamundi/>

Chief Editor: David Plotkin, insectamundi@gmail.com

Assistant Editor: Paul E. Skelley, insectamundi@gmail.com

Head Layout Editor: Robert G. Forsyth

Editorial Board: J. H. Frank, M. J. Paulsen

Founding Editors: Ross H. Arnett, Jr., Virendra Gupta, John B. Heppner, Lionel A. Stange, Michael C. Thomas, Robert E. Woodruff

Review Editors: Listed on the *Insecta Mundi* webpage

Printed copies (ISSN 0749-6737) annually deposited in libraries

CSIRO, Canberra, ACT, Australia

Museu de Zoologia, São Paulo, Brazil

Agriculture and Agri-Food Canada, Ottawa, ON, Canada

The Natural History Museum, London, UK

Muzeum i Instytut Zoologii PAN, Warsaw, Poland

National Taiwan University, Taipei, Taiwan

California Academy of Sciences, San Francisco, CA, USA

Florida Department of Agriculture and Consumer Services, Gainesville, FL, USA

Field Museum of Natural History, Chicago, IL, USA

National Museum of Natural History, Smithsonian Institution, Washington, DC, USA

Zoological Institute of Russian Academy of Sciences, Saint-Petersburg, Russia

Electronic copies (Online ISSN 1942-1354, CDROM ISSN 1942-1362) in PDF format

Printed CD or DVD mailed to all members at end of year. Archived digitally by Portico.

Florida Virtual Campus: <http://purl.fcla.edu/fcla/insectamundi>

University of Nebraska-Lincoln, Digital Commons: <http://digitalcommons.unl.edu/insectamundi/>

Goethe-Universität, Frankfurt am Main: <http://nbn-resolving.de/urn/resolver.pl?urn:nbn:de:hebis:30:3-135240>

Copyright held by the author(s). This is an open access article distributed under the terms of the Creative Commons, Attribution Non-Commercial License, which permits unrestricted non-commercial use, distribution, and reproduction in any medium, provided the original author(s) and source are credited. <http://creativecommons.org/licenses/by-nc/3.0/>

Layout Editor for this article: Robert G. Forsyth

First association of scale insects (Hemiptera: Diaspididae) with *Salacia crassifolia* (Mart. Ex Schult.) G. Don. (Celastraceae)

Marcelo Tavares de Castro

Centro Universitário ICESP de Brasília
Departamento de Agronomia
Brasília, 71961-540, Brazil
marceloengflorestal@gmail.com

Sandro Coelho Linhares Montalvão

Embrapa Recursos Genéticos e Biotecnologia
Laboratório de Bactérias Entomopatogênicas
Brasília, 70770-917, Brazil
sandro.coelho@yahoo.com.br

Vera Regina dos Santos Wolff

Secretaria Estadual de Agricultura, Pecuária e Desenvolvimento Rural
Departamento de Diagnóstico e Pesquisa Agropecuária
Rio Grande do Sul, 90130-060, Brazil
wolffvera@gmail.com

Rose Gomes Monnerat

Embrapa Recursos Genéticos e Biotecnologia
Laboratório de Bactérias Entomopatogênicas
Brasília, 70770-917, Brazil
rose.monnerat@embrapa.br

Abstract. *Salacia crassifolia* (Mart. ex Schult.) G. Don., (Celastraceae) is a native species of shrub/tree highly appreciated in Brazil for its fruits and medicinal properties. Scale insects have never been reported associated with *S. crassifolia*; nevertheless, this paper describes the occurrence of two diaspidids on *S. crassifolia* leaves in Brazil. Three mature trees were inspected in February and March 2018 and scale insect samples were collected and preserved in 70% alcohol, then mounted and identified under an optical microscope. Two species of scale insects were found associated with this plant, *Pseudoparlatoria argentata* Hempel and *Melanaspis aristotelesi* Lepage and Giannotti, both from the family Diaspididae (Hemiptera). The three observed trees were infested by the diaspidids, with some leaves completely colonized by both species. This is the first reported occurrence of *P. argentata* and *M. aristotelesi* in plants of the Celastraceae family. It is also the first report of these insects in the Distrito Federal, Brazil, expanding the distribution and hosts in native plant species of the Cerrado biome.

Key words. Brazilian savanna, forest entomology, pest insects, native scale insects.

Introduction

The Cerrado *sensu lato* is the second largest Brazilian biome in area, second only to the Amazon rainforest (Ribeiro and Walter 2008). A wide diversity of plants, animals, and microorganisms occurs in this biome and several species are considered endemic. Therefore, it is considered a hotspot for the conservation of world biodiversity (Klink and Machado 2005).

The Celastraceae family includes trees, shrubs, subshrubs, and lianas found mainly in tropical regions, including the Brazilian Cerrado (Oliveira et al. 2012; Groppo and Erbert 2015). Molecular studies clustered members of the Hippocrateaceae family within Celastraceae, characterizing them as a paraphyletic group (Simmons and Hedin 1999; Simmons et al. 2000, 2001; Groppo and Erbert 2015) whose species share similar chemical compounds (Oliveira et al. 2012). The genus *Salacia* L. is one of the most represented genera of Celastraceae in the Neotropical region, with over 30 described species (Lombardi and Temponi 2001). *Salacia crassifolia* (Mart. Ex Schult.) G. Don. is one of the most important species for the Cerrado region (Silva Junior 2005).

Salacia crassifolia is a shrub/tree species that grows to six meters high and is widely distributed in the Brazilian Cerrado, especially in the Cerrado *sensu stricto* and Cerradão (Almeida et al. 1998). It has simple, alternating, elliptical or oblong leaves, with acute, obtuse, or retained apices (Silva Júnior 2005). Its fruits are berries with sweet pulp that are frequently eaten by the local fauna and indigenous peoples. In folk medicine, the plant is used as an antibiotic (Silva Júnior 2005) and to treat diseases (Oliveira et al. 2012; Carneiro et al. 2013, 2018). In addition, the leaf extract has antimicrobial properties (Rodrigues et al. 2015).

Studies about insects associated with *S. crassifolia* have concentrated on their fruits, in which several species of fruit flies (Diptera: Tephritidae and Lonchaeidae) have been described, including species new to science (Braga Filho et al. 2001; Bomfim et al. 2014). Scale insects associated with Celastraceae species, including *S. crassifolia*, have never been reported in the Brazilian Cerrado (García Morales et al. 2016). Therefore, this paper is the first record of the occurrence of two diaspidids on *S. crassifolia*.

Materials and Methods

The work was carried out with three adult *S. crassifolia* trees located in Brasilia, Federal District, Brazil (15°56'57.2" S, 48°10'00.4" W). The three plants produce flowers and fruits regularly.

Leaf samples of the *S. crassifolia* that contained scale insects were collected in February and March 2018. The collected material was fixed in Falcon tubes containing 70% ethanol and mounted on slides following the methods adapted and described by Wolff et al. (2014) for identification under optical microscope. The specimens were identified according to the morphological characteristics of adult females based on the literature for species determination (Lepage and Giannotti 1944; Wolff 2008). The slides containing the scale insects are deposited at the Ramiro Gomes Costa Entomology Museum (MRGC), State Department of Agriculture, Livestock and Rural Development (DDPA, SEAPDR, RS).

Furthermore, 30 leaves (ten from each tree) were randomly collected from the infested plants and the number of scales was counted with the aid of a magnifying glass with 30× magnification, without species-level identification, in order to verify the average number of individuals found per leaf. All pictures were taken by the first author (M.T.C.) using a digital camera (Sony®).

Results

Two scale insects were found associated with *S. crassifolia*: *Pseudoparlatoria argentata* Hempel (Fig. 1) and *Melanaspis aristotelesi* Lepage and Giannotti (Fig. 2), both from the family Diaspididae (Hemiptera).

The three plants were infested by the diaspidids, with some leaves completely colonized by both species. The insects of this family produce scales that cover their bodies, protecting them, but the scales can easily detach from individuals.

The species *P. argentata* was most abundant on the underside of the leaf, whereas *M. aristotelesi* was more abundant on the upper surface. Due to the high infestation, these insects could impair the photosynthesis process of the plant, as the leaf surfaces were almost completely covered by scale insects, especially *M. aristotelesi*. An average of 328 individual diaspidids was observed on the leaves of the *S. crassifolia* evaluated, with a minimum of 36 and a maximum of 842 individuals. All thirty leaves collected for analysis had diaspidids and the most infested leaves exhibited symptoms of chlorosis on both surfaces.

Discussion

The genus *Pseudoparlatoria* Cockerell is native to the Neotropical region (Malumphy and Redstone 2012) and has been extensively reviewed by Wolff (2001, 2008). It currently has over 40 described species, of which 19 species occur in Brazil (Wolff 2001, 2008; García Morales et al. 2016). This species is a polyphagous scale insect and can be found in the Central-West, Southeast, and Southern regions of Brazil, as well as some provinces of Argentina. It is associated with nine botanical genera, each in a different family, and so far, it is not known to be phytophagous in Celastraceae (Wolff 2008; García

Morales et al. 2016).

The scale that covers *P. argentata* in the prepupal and male pupal stages is elongated and less than 1 mm long. The scale of the adult female is circular or subcircular, about 1.2 mm in diameter, rough, convex, dark brown to black, and with flat margins that are lighter and transparent. The adult female body is subcircular, about 0.6 mm in diameter, similar to *Pseudoparlatoria constricta* Fonseca in that it has a few marginal macroducts, submarginal macroducts much smaller than at the margins from the first abdominal segments, and several microducts in the pre-pygidium abdominal lobes and scattered throughout the pygidium. It differs from *P. constricta* due to the lack of constriction in the margin of the apical cephalothorax (Wolff 2008).

Melanaspis Cockerell has 65 species, 28 of which are Neotropical, and 12 of which occur in Brazil. Most species of *Melanaspis* are monophagous (García Morales et al. 2016). Several species that had been described in *Melanaspis* have been transferred to the genus *Acutaspis* Ferris, based mainly on the shape of the pygidium and the size and location of the anal opening (García Morales et al. 2016).

The scale of *M. aristotelesi* adult female is more or less circular, measuring about 1.4 mm in diameter; the scale of the male is not known. The body of the adult female of *M. aristotelesi* is about 1 mm in diameter (Lepage and Giannotti 1944).

Among the *Melanaspis* species that occur in Brazil, *Melanaspis bondari* Lepage and Giannotti most closely resembles *M. aristotelesi*; both have five pairs of paraphyses with similar shape and distribution in the pygidium. However, *M. aristotelesi* does not possess two slightly sclerotized tubercles on the point of the posterior spiracles, as found in *M. bondari*. Furthermore, the shape of the pygidial lobes is different, and after the third pair of lobes, *M. aristotelesi* has only a small protrusion representing the fourth lobe. *Melanaspis bondari* has a series of 3–4 protrusions on the pigment margin (Lepage and Giannotti 1943, 1944).

Melanaspis aristotelesi was described in 1944 by Lepage and Giannotti, associated with cashew tree (*Anacardium occidentale* L., Anacardiaceae) in the state of Alagoas, Brazil; this is the only host plant record (Claps et al. 1999; García Morales et al. 2016). The association of this diaspidid with a plant from the Brazilian Cerrado increases the possibility of the species being polyphagous.

In the present study, we report the expanding distribution and hosts of *P. argentata* and *M. aristotelesi*, in native plant species of the Cerrado biome, in the Distrito Federal, Brazil. Both diaspidid species were found on *S. crassifolia*, with some leaves completely infested with both species.

Acknowledgments

We thank CAPES for their financial support, and thank Dr. Lucia Elena Claps of the Instituto Superior de Entomología “Dr. Abraham Willink” (INSUE) and Universidad Nacional de Tucumán, San Miguel de Tucumán, Argentina, and Dr. Vitor Cezar Pacheco da Silva, Facultad de Agronomía - Unidad de Entomología, Universidad de la República, Montevideo, Uruguay, for reviewing the manuscript.

Literature Cited

- Almeida, S. P., C. E. B. Proença, S. M. Sano, and J. F. Ribeiro. 1998. Cerrado: Espécies vegetais úteis. Planaltina. EMBRAPA-CPAC; Brasília. 464 p.
- Bomfim, D. A. D., L. J. Gisloti, and M. A. Uchôa-Fernandes. 2014. Fruit flies and lance flies (Diptera: Tephritoidea) and their host plants in a conservation unit of the Cerrado Biome in Tocantins, Brazil. *Florida Entomologist* 97: 1139–1147.
- Braga Filho, J. R., V. R. S. Veloso, R. V. Naves, and G. A. Ferreira. 2001. Entomofauna associada aos frutos do bacupari, *Salacia crassifolia* (Mart.), nos Cerrados do Brasil Central. *Pesquisa Agropecuária Tropical* 31: 47–54.
- Carneiro, C. C., C. R. Silva, A. C. Menezes, C. N. Pérez, and L. Chen-Chen. 2013. Assessment of genotoxic, cytotoxic, and protective effects of *Salacia crassifolia* (Mart. Ex. Schult.) G. Don stem bark fractions in mice. *Genetics and Molecular Research* 12: 2167–2177.
- Carneiro, C. C., J. H. Vêras, B. R. L. Góes, C. N. Pérez, and L. Chen-Chen. 2018. Mutagenicity and

- antimutagenicity of *Salacia crassifolia* (Mart. Ex. Schult.) G. Don. evaluated by Ames test. *Brazilian Journal of Biology* 78: 345–350.
- Claps L. E., V. R. S. Wolff, and R. González. 1999.** Catálogo de las Diaspididae (Hemiptera, Coccoidea) nativas de Argentina, Brasil y Chile. *Revista de la Sociedad Entomológica Argentina* 13: 238–256.
- García Morales, M., B. D. Denno, D. R. Miller, G. L. Miller, Y. Ben-Dov, and N. B. Hardy. 2016.** ScaleNet: A literature-based model of scale insect biology and systematics. Available at <http://scalenet.info>. (Last accessed February 2020.)
- Groppo, M., and C. Erbert. 2015.** Flora da Serra do Cipó, Minas Gerais: Celastraceae *sensu lato*. USP. *Boletim de Botânica da Universidade de São Paulo* 33: 15–27.
- Klink, C. A., and R. B. Machado. 2005.** A conservação do Cerrado Brasileiro. *Megadiversidade* 1: 148–155.
- Lepage, H. S., and O. Giannotti. 1943.** Notas coccidológicas (Homoptera-Coccoidea). *Arquivos do Instituto Biológico* 14: 331–350.
- Lepage, H. S., and O. Giannotti. 1944.** Algumas espécies novas de coccideos do Brasil (Homoptera - Coccoidea). *Arquivos do Instituto Biológico* 15: 299–306.
- Lombardi, J. A., and L. G. Temponi. 2001.** Flora del Paraguay - 36. Hippocrateaceae. *Conservatoire et Jardín botaniques de la Ville de Genève & Missouri Botanical Garden*; Geneva, Switzerland. 36 p.
- Malumphy, C., and S. Redstone. 2012.** Grey scale *Pseudoparlatoria ostreata* Cockerell (Hemiptera: Diaspididae), a pest of indoor plantings new to Britain. *Entomologist's Gazette* 63: 107–114.
- Oliveira, C. R., A. C. S. Menezes, M. O. Moraes, L. M. Vieira, A. G. Pereira, R. S. Lima, and M. L. Santos. 2012.** Avaliação citotóxica em três linhagens de células tumorais das frações obtidas da casca do caule de *Salacia crassifolia* (Mart. Ex. Schult.) G. Dom. (Celastraceae). *Revista Colombiana de Ciências Químico-Farmacêuticas* 41: 133–142.
- Ribeiro, J. F., and B. M. T. Walter. 2008.** As principais fitofisionomias do bioma Cerrado. p. 151–212. *In: S. M. Sano, S. P. Almeida, and J. F. Ribeiro (eds.). Cerrado: ecologia e flora*. Embrapa; Brasília. 876 p.
- Rodrigues, V. G., L. P. Duarte, R. R. Silva, G. D. F. Silva, M. O. Mercadante-Simões, J. A. Takahashi, B. L. G. Matildes, T. H. S. Fonseca, M. A. Gomes, and A. S. Vieira Filho. 2015.** *Salacia crassifolia* (Celastraceae): chemical constituents and antimicrobial activity. *Química Nova* 38: 237–242.
- Silva Júnior, M. C. 2005.** 100 árvores do cerrado: guia de campo. Rede de Sementes do Cerrado; Brasília. 278 p.
- Simmons, M. P., C. C. Clevinger, V. Savolainens, R. H. Archer, S. Mathews, and J. Doylej. 2001.** Phylogeny of the Celastraceae inferred from phytochrome B gene sequence and morphology. *American Journal of Botany* 88: 313–325.
- Simmons, M. P., and J. P. Hedin. 1999.** Relationships and morphological character change among genera of Celastraceae (including Hippocrateaceae). *Annals of the Missouri Botanical Garden* 86: 723–757.
- Simmons, M. P., V. Savolainens, C. C. Clevinger, R. H. Archer, S. Mathews, and J. I. Davis. 2000.** Phylogeny of the Celastraceae inferred from morphology and nuclear and plastid loci. *American Journal of Botany* 87: 156–157.
- Wolff, V. R. S. 2001.** Dez espécies novas de *Pseudoparlatoria* Cockerell, 1892 (Hemiptera; Coccoidea; Diaspididae). *Arquivos do Instituto Biológico* 68: 67–76.
- Wolff, V. R. S. 2008.** Revisão de *Pseudoparlatoria* (Hemiptera: Diaspididae). *Iheringia. Série Zoologia* 98: 291–307.
- Wolff, V. R. S., M. Botton, and D. C. Silva. 2014.** Diaspidídeos e parasitoides associados ao cultivo da videira no Rio Grande do Sul, Brasil. *Revista Brasileira de Fruticultura* 36: 835–840.

Received March 17, 2020; accepted May 21, 2020.

Review editor Lawrence Hribar.

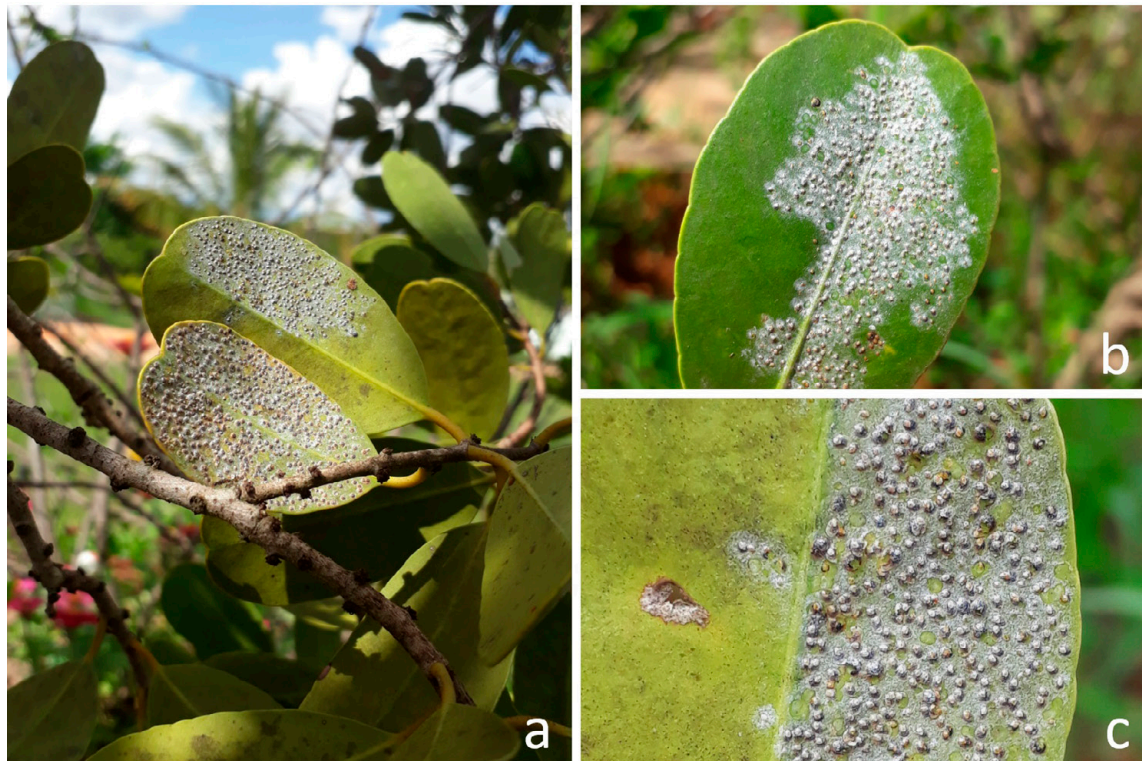


Figure 1. *Pseudoparlatoria argentata* associated with *Salacia crassifolia* in Brasilia, Brazil. **a)** *S. crassifolia* tree infested with diaspidids. **b)** Lower surface of leaf highly infested with diaspidids. **c)** Detail of the *P. argentata* scales.

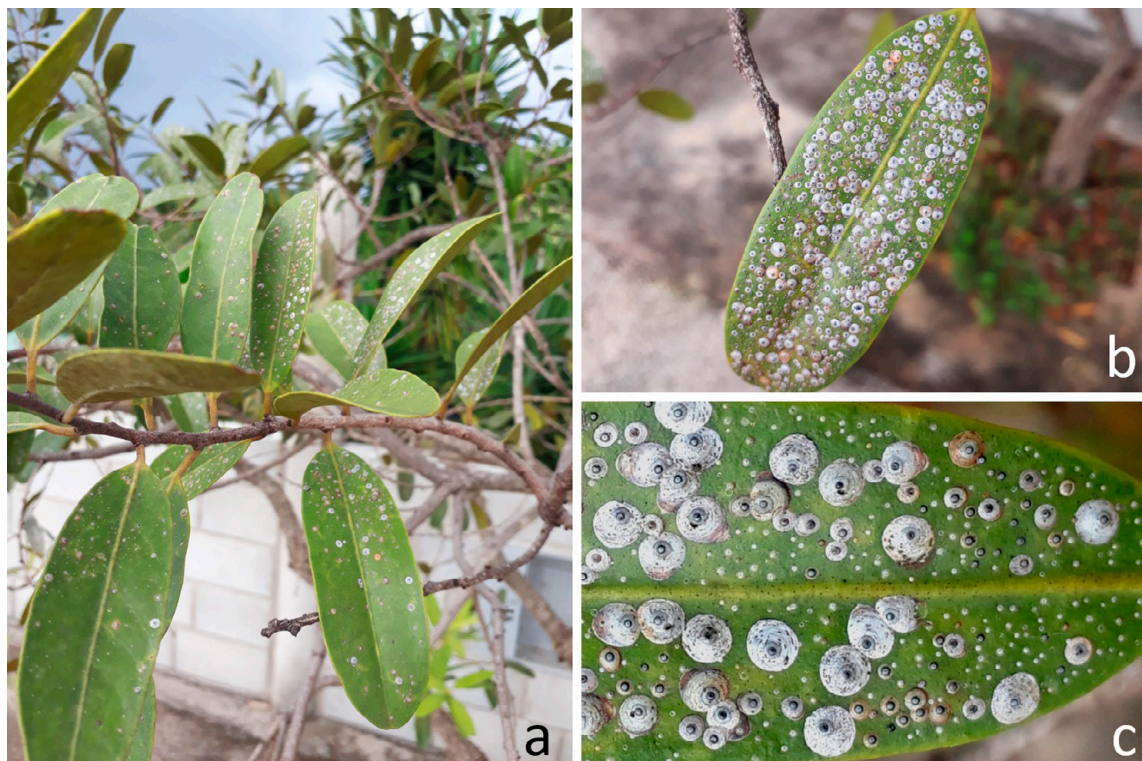


Figure 2. *Melanaspis aristotelesi* associated with *Salacia crassifolia* in Brasilia, Brazil. **a)** *S. crassifolia* tree infested with diaspidids. **b)** Upper surface of leaf highly infested with diaspidids. **c)** Detail of the *M. aristotelesi* scales.

